

Song Kang-ho

Lee Sun-kyun

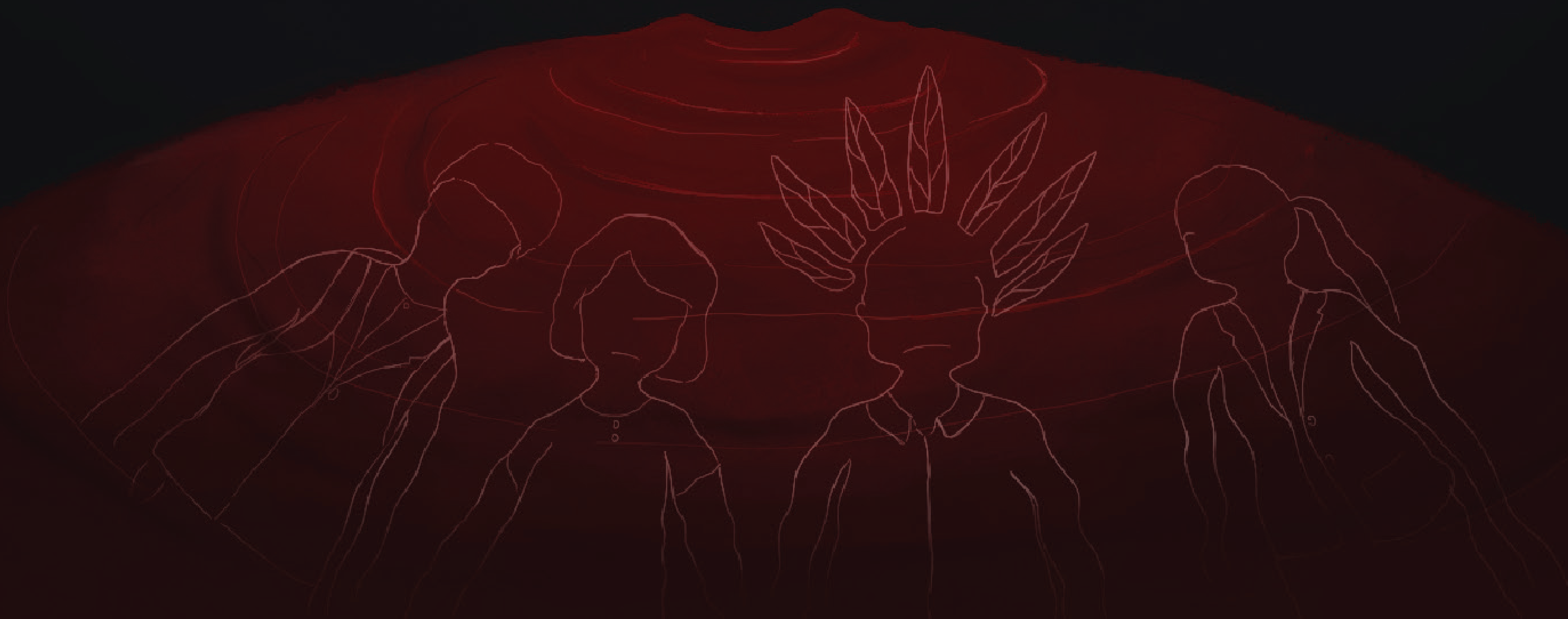
Cho Yeo-jeong

Choi Woo-shik

Park So-dam

A FILM BY BONG JOON-HO

Parasite



MISPLACED FAMILYHOOD





Echoes of Disparity

In the labyrinth of class warfare, "Parasite" weaves a tale that exposes the wounds of social inequality. The design reflects the Kim family's infiltration into the lives of the affluent Parks, a stratagem that blurs the line between the leech and the host. At its core, the narrative throbs with the realities of desire, ambition, and survival instincts, all captured in the sinuous drip of betrayal.

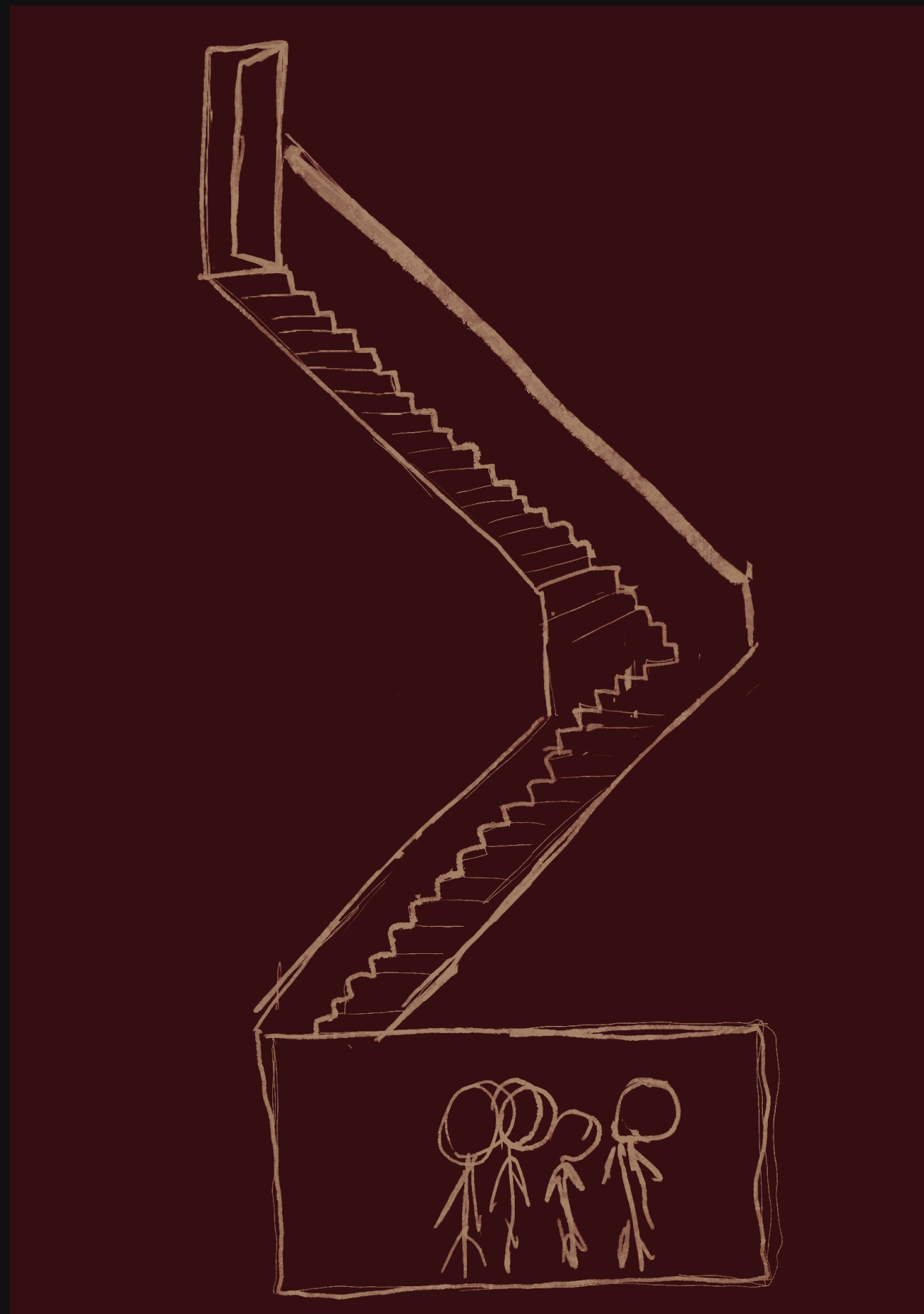
A Mirror to the Discerning Eye

The film speaks to a global audience with a taste for thrillers that dissect the human condition. It is tailored for those who relish a cinematic experience that holds a mirror to society, encouraging a profound reflection on the lines we draw and the lives we lead.



Palette of Emotions

I chose a soft peach tone overshadowed by darkness to symbolize innocence and its corruption. The striking red signifies the lurking danger and the eventual spilling over of tensions that were simmering beneath.



MIRRORING REALITY

